

DCR LITE

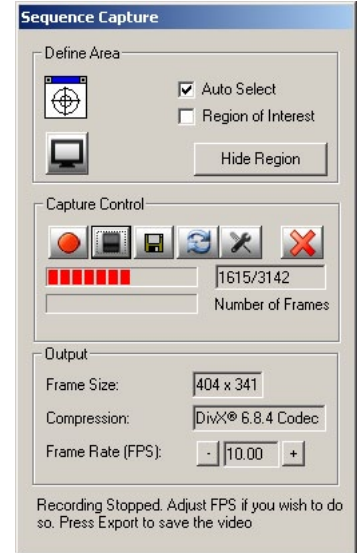
DIGITAL CCTV DECODE, EDIT & EXPORT



OVERVIEW

Digital CCTV Replay (DCR) supports automatic digital video file detection and playback. When digital media is introduced to the Digital CCTV Replay system, the advanced software actively searches, recognises and automatically loads the detected digital video files. DCR has an extensive range of supported digital video players and codecs that are managed by DCR and made available on demand as required, the codec and player management ensures system stability and reliability of the operating system which is cleaned each time a player is closed. Once the video file has been loaded, easy to use tools allow images and sequences to be produced. The Case Management function manages the exported files and locations to system or network storage.

Snapshot & Advanced Screen Capture



- | Capture still images
- | Record precise video sequences
- | Export in any format
- | Adjust output frame rate

ViewSTATION

DCR PRO

DCR Lite

dMUX PRO

VideoBOX Lite

VideoBOX PRO

VideoBOX Digital

VideoSAFE

Easy 3 step Operation

1. Media Detect

DCR will auto-detect any newly introduced media device such as CD/DVD/USB/HDD or network device and display a list of detected video files which are supported.

2. Select File

When the file is selected, DCR will offer a choice of suitable playback software or the built-in DCR file player and editor.

3. View File and capture images

Once the data has been loaded, the snapshot & screen capture tools allow images and sequences to be easily produced. The advanced sequence capture records exactly the images replayed allowing a 100% accurate recording to be made, the output and playback speed can then be adjusted as required.

DCR Player & Video Sequence Editor



DCR LITE media file player now supports a number of digital DVR files as well as almost all media files types including HD video.

The simple to use edit tools allow sequences to be easily shortened and exported with fast encoding to a standard codec allowing the resulting file to be easily saved or emailed due to the reduced size. Using a standard windows compatible codec allows the file to be more easily viewed by other users or produced as part of an evidential DVD.

The snapshot button produces still images at the native file resolution, even at full HD.

DCR LITE has been developed from the PRO version which is used worldwide in police technical support units by professional video forensic technicians and high volume users at police divisional level by non-technical users.

Typical PC Configurations

DCR is equally able to run on standard desktop PC or laptop running Windows XP or Windows 7. Ideally with dual core CPU, 2GB RAM and SATA hard drive with minimum 1280 horizontal resolution display. Optional video output is available subject to system configuration.

DCR Installers are available for Windows English: Swedish, German and other languages on request.

Document Rev 4.115